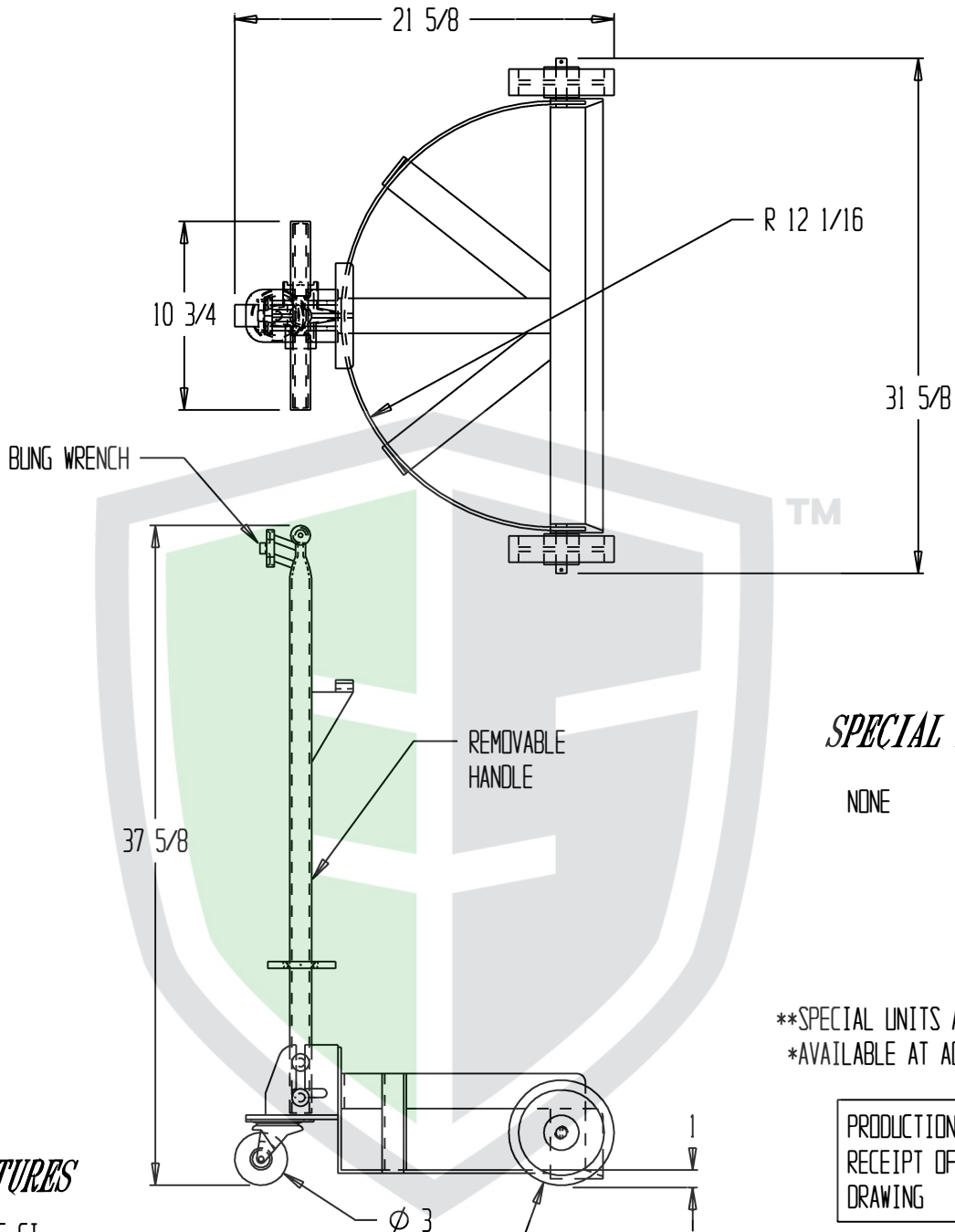


LOW PROFILE DRUM DOLLY, LO-DC-CI



SPECIAL FEATURES

NONE

**SPECIAL UNITS ARE NON-RETURNABLE
*AVAILABLE AT ADDITIONAL COSTS

PRODUCTION WILL START UPON
RECEIPT OF SIGNED APPROVAL
DRAWING

STANDARD FEATURES

MODEL NUMBER: LO-DC-CI
CAPACITY: 1,200 LBS
CASTERS: (2) - FRONT, Ø 6" - CAST IRON WHEELS
(1) - BACK, Ø 3" - SWIVEL
OVERALL LENGTH: 21 5/8 INCHES
OVERALL WIDTH: 31 5/8 INCHES
OVERALL HEIGHT: 37 5/8 INCHES
INCLUDES REMOVABLE PIVOTING HANDLE
W/ BUILT IN BUNG NUT WRENCH,
SEAL REMOVER AND DRUM LIFTER BAR

A
P
P
R
O
V
A
L

I, THE UNDERSIGNED, AGREE THAT THE PRODUCT AS REPRESENTED SATISFIES DESIGN & DIMENSION REQUIREMENTS. I ALSO ACKNOWLEDGE MY DUTY TO CONFIRM PRODUCT & INSTALLATION COMPLIANCE WITH ALL APPLICABLE FEDERAL, STATE AND LOCAL REGULATIONS & STANDARDS.

ALL SPECIAL UNITS ARE NON-RETURNABLE

[] As drawn [] As marked

Signed: _____ Date: _____

LEAD TIME WILL START UPON RECEIPT OF SIGNED APPROVAL DRAWING

DISTRIBUTOR'S NAME: <i>EcoSolutions, Inc.</i>		Phone # 712-545-3439	P.O.#: -
DRAWN BY: TJM		DATE: 1/30/2012	W.O.#: -
REFERENCE: -		SCALE: 1:10	SALES: -
QUOTED LEADTIME: -		QUOTE #: -	DRWG./FILE NAME: 16-007-308