

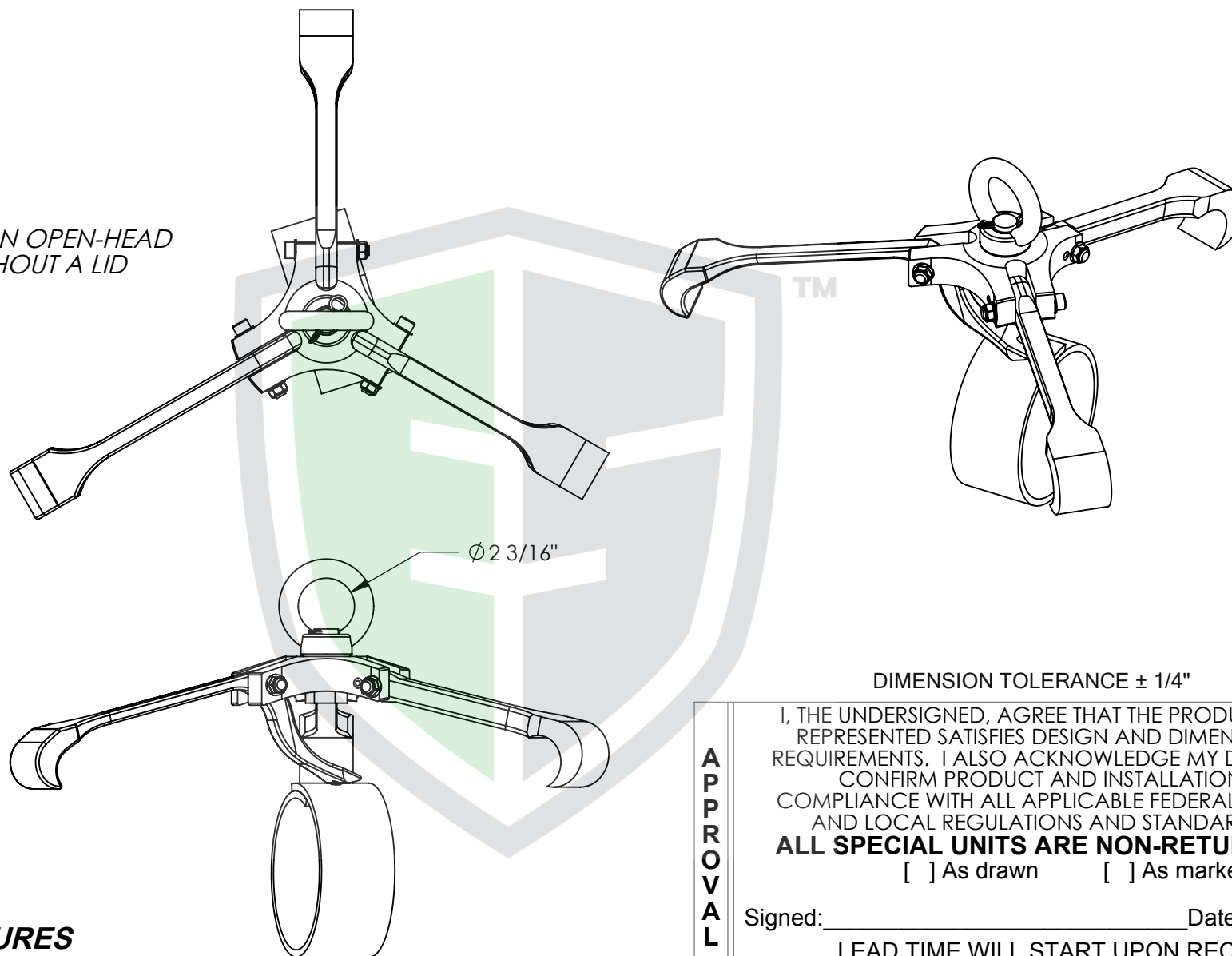
DRUM GRABBER - DRUM-GRAB

APPROX WEIGHT: 20.43 lbs.
DOES NOT INCLUDE WEIGHT OF POWER OR PACKAGING!!!

*** ANY ADDITIONS, DELETIONS, OR OMISSIONS MUST BE CORRECTED ON THIS DRAWING AS THIS DRAWING WILL BE CONSIDERED ALL INCLUSIVE ***

ALL GRAPHICS PROVIDED ARE FOR REFERENCE ONLY. IF CERTAIN DIMENSIONS ARE CRITICAL PLEASE VERIFY THOSE DIMENSIONS WITH YOUR SALESPERSON

NOT FOR USE ON OPEN-HEAD
DRUMS WITHOUT A LID



DIMENSION TOLERANCE $\pm 1/4$ "

APPROVAL

I, THE UNDERSIGNED, AGREE THAT THE PRODUCT AS REPRESENTED SATISFIES DESIGN AND DIMENSION REQUIREMENTS. I ALSO ACKNOWLEDGE MY DUTY TO CONFIRM PRODUCT AND INSTALLATION COMPLIANCE WITH ALL APPLICABLE FEDERAL, STATE AND LOCAL REGULATIONS AND STANDARDS.
ALL SPECIAL UNITS ARE NON-RETURNABLE
[] As drawn [] As marked

Signed: _____ Date: _____

LEAD TIME WILL START UPON RECEIPT
OF SIGNED APPROVAL DRAWING

STANDARD FEATURES

MODEL NUMBER IS DRUM-GRAB
WORKS ON 55-GALLON STEEL DRUMS
WITH LID INSTALLED
CAPACITY - 2,200 LBS
WEIGHT - 20 LBS
INCLUDES POLYURETHANE SPRING
LARGE LIFTING RING

DISTRIBUTOR'S NAME:		Phone #	P.O.#
EcoSolutions, Inc.		712-545-3439	X
DRAWN BY:	A. TRINE	DATE:	06/27/2013
REFERENCE:	X	SCALE:	1:8
QUOTED LEAD TIME:	X	QUOTE #	X
			FILE NAME:
			09-007-177